

D.A.D

S P O R T S W E A R

2018/2019

DREAM & DISCOVER





POLO PIQUE & T-SHIRT

COLLEGE & FLEECE

SOFTSHELL

JACKETS

D.A.D ASSORTMENT OVERVIEW

FABRIC SPECIFICATIONS

THAT'S DAD!

NEWS!

HILLSTONE - 134058 HILLSTONE LADY - 134059

Soft functional polo in a smooth material with a structure which gives a living expression. Sporty design with fabric collar and concealed button closure, 3 discreet pushbuttons. Straight sleeves and slit in the bottom. The ladies model has a busty seam for a better fit.

Fabric: 100% polyester
Size: S - 3XL, Lady S - XXL
Wash: 40°
Weight: 170 g/m²





BENDIGO - 134046
BENDIGO LADY - 134047

Sporty functional polo in a smooth material and without the traditional collar. Soft-fitting material in a combination of tone-in-tone colors in addition to black solid. Modern fit with framed sidestitch and prominent stitch on the shoulder strap. Shaped neckline where the lady model has a somewhat deeper ring. Button lock with hidden button closure and 2 discreet pushbuttons. Straight cuffs.

Fabric: 100% polyester
 Size: S - 3XL, Lady S - XXL
 Wash: 40°
 Weight: 150 g/m²



366
green/dusty green

388
blue/dusty blue

300
grey/ dark grey

990
black







D.A.D
SPORTSWEAR
INSPIRED BY LIFE

PARKES - 134054
PARKES LADY - 134055

Very affordable and modern polo pique with heavy ribbed collar and cuffs. Two buttons on the placket and slit at hem. Decorative seams in overlock.

Fabric: 100% Cotton
 Size: S - 4XL, Lady XS - XXL
 Wash: 60°
 Weight: 200 g/m²



GIFFORD - 134056
GIFFORD LADY - 134057

Modern polo pique that is pre-washed to get the right vintage look. Sturdy collar and cuffs. Two buttons on the placket and slit at hem.

Fabric: 100% Cotton, garment wash
 Size: S - 4XL, Lady XS - XXL
 Wash: 60°
 Weight: 220 g/m²





LYNTON - 134030
LYNTON LADY - 134031

Well-tailored polo pique with contrast colour details.
 Decorative stitching on the yoke.
 Sturdy double-knit collar and decorative matching inner neckband.

Fabric: 100% Cotton
 Size: S - 3XL, Lady S - XXL
 Wash: 40°
 Weight: 240 g/m²



100 white 735 blue 855 navy 990 black



EATON - 134026
EATON LADY - 134027

Modern fit and new knitting technique guarantees high comfort and form stability. Extra sturdy collar with neck band and reinforced outside.
 3 buttons and sleeve cuffs. Decorative overlock seams and reinforced slits at the bottom. Ladies' styles has breast folds.

Fabric: 100% Cotton
 Size: S - 3XL (black S - 4XL), Lady S - XXL
 Wash: 60°
 Weight: 260 g/m²



100 white 290 orange 460 red 855 navy 990 black

EATON BRANDED - 13H4026
EATON BRANDED LADY - 13H4027

Eaton in a version with many stylish maritime markings and applications.

Wash: 40° (due to branding)
 Otherwise: specifications as above.



100 white 990 black

SHEPPARTON - 134052
SHEPPARTON LADY - 134053

Polo pique with mixed-materials which have the comfortable feeling of cotton on the outside and cooldry/polyester on the inside. You get the pleasant feeling of cotton together with cooldry's ability to breathe and transport moisture away from the body. Discreet contrasting color on the inside placket, decorative neck rib, collar and slits at the hem.

Fabric: 55% Cotton, 45% Cooldry/polyester
 Size: S - 4XL, Lady XS - XXL
 Wash: 40°
 Weight: 170 g/m²



100
white

645
green

855
navy

990
black



STANFORD - 134042
STANFORD LADY - 134043

Functional T-shirt with mixed-material which has the comfortable feeling of cotton on the outside and cooldry/polyester on the inside. The material has the ability to breathe and transport moisture away from the body. Woven necktape with decorative stitching. Slits at hem.

Fabric: 55 % Cotton, 45% Cooldry/polyester
 Size: S - 4XL, Lady S - 3XL
 Wash: 40°
 Weight: 170 g/m²



990
black





WINNING - 134020
WINNING LADY - 134021

Two-tone functional polo pique in Cooldry. The characteristics of cooldry makes the pique breathable and efficiently transport moisture away from the body, which means you stay dry longer and can get more out of your training program. Tight model with spandex for a close fit

Fabric: 95% Cooldry/polyester, 5% spandex
 Size: S - XXL (746 turquoise S - 3XL), Lady S - XXL
 Wash: 40°
 Weight: 170 g/m²



100 white 460 red 746 turquoise 850 navy 990 black



WICKHAM - 134018
WICKHAM LADY - 134019

Two-tone functional T-shirt in Cooldry. The characteristics of cooldry makes the t-shirt breathable and efficiently transport moisture away from the body, which means you stay dry longer and can get more out of your training program. Tight model with spandex for a close fit

Fabric: 95% Cooldry/polyester, 5% spandex
 Size: S - XXL (990 black S - 3XL), Lady S - XXL
 Wash: 40°
 Weight: 170 g/m²



100 white 296 orange 460 red 850 navy 990 black

TACTICAL 10 RACING POLO UNISEX - 134034

Sporty well-tailored functional Cooldry polo pique with polyester mesh details in selected areas. Cooldrys attributes makes the polo both breathable and moisture wicking. Detail cut with raglan sleeves.

Fabric: 100% Cooldry/polyester
Size: Unisex: XS - 3XL
Wash: 40°
Weight: 170 g/m²



990
black



LANGLEY LADY - 134016

This functional polo pique is loosely tailored for a comfortable fit and made of Cooldry – a material that breathes and disperses moisture. The polo comes in ladies style and is designed with a deep neck opening and five buttons.

Fabric: 100% Cooldry/polyester
Size: S - XXL
Wash: 40°
Weight: 150 g/m²



450
red





CORAL BAY - 134022
CORAL BAY LADY - 134023

Functional polo pique with +30 UV protection in moisture wicking CoolTouch yarn. Patterned collar and decorative ribbon at the bottom.

Fabric: 100% CoolDry/polyester
 Size: S - 3XL, Lady S - XXL
 Wash: 40°
 Weight: 180 g/m²

**UV +30
 PROTECTION**



735
blue

990
black



AUCKLAND - 134006
AUCKLAND LADY - 134002
AUCKLAND JUNIOR - 134007

Auckland has been specially treated to give a better printing surface.

Fabric: 100% cotton
 Size: S - XXL (white, red och navy S - 3XL, black S - 4XL)
 Lady S - XXL
 Junior 120cl, 140cl, 160cl
 Wash: 60°
 Weight: 180 g/m²



JR

990
black

550
brown

655
dark olive

630
lime

250
yellow

450
red

296
orange

740
turquoise

720
lightblue

750
blue

850
navy

100
white

900
silver (only man)

JR



MILLSTREAM - 132012
MILLSTREAM LADY - 132013

Rugger with jersey body and twill collar. Hidden placket at front, contrast colour inside placket and half moon. Rubber buttons. Rib cuffs and side vents. Has a special treatment to give a better printing surface.

Fabric: 100% Cotton
 Size: S - XXL (black S-3XL) Lady S - XXL
 Wash: 40°
 Weight: 290 g/m²



460 red 855 navy 990 black

CARDWELL UNISEX - 132018

Sweater in rugby model with heavy cotton jersey and lightly brushed exterior provides a nice feeling. Collar and placket in twill with rubber buttons. Quilted pattern on the shoulder gives an exclusive look. Cuffs at sleeves and side slit with herringbone reinforcements

Fabric: 100% Cotton
 Size: XS - 4XL
 Wash: 40°
 Weight: 320 g/m²



855 navy



WESTBURY UNISEX - 132020

Maritime sporty halfzip sweatshirt in sturdy, specially treated material which gives a superb quality that is usually only found on more expensive brands.

Thoroughly worked with recessed twill details. Front pockets, extra heavy 2 x 2 ribbed collar, sleeves and hem gives a solid impression.

Fabric: 80% Cotton, 20% polyester
Size: XS - 4XL
Wash: 40°
Weight: 350 g/m²



855
navy



RIVERTON - 132019

Hooded sweater in modern sporty cut with raglan sleeves and specially treated material which gives a superb quality that is usually only found on more expensive brands. YKK quality zipper that goes up to the collar. Front pockets and hood with extra sturdy drawstring. 2 x 2 rib cuff at sleeve and bottom hem.

Fabric: 80% Cotton, 20% polyester
Size: XS - 4XL
Wash: 40°
Weight: 350 g/m²



Note! Due to a pretreatment of the material, which gives the garment a nice matte surface, it can occur nuances between different production numbers in our warehouse.



990
black

BIRDSVILLE - 132007
BIRDSVILLE LADY - 132008

Sturdy sweatshirt with full zip and zipped side pockets. Sturdy ribbed collar, sleeves and bottom hem. Piping in body material on sleeves.

Fabric: 80% Cotton, 20% polyester
Size: S - XXL (990 black S - 3XL), Lady S - XXL
Wash: 60°
Weight: 400 g/m²



955
darkgreymelange

990
black



BROOMHILLE - 132003
BROOMHILLE LADY - 132004

Hood with rib at bottom hem and sleeves and elastic drawstring at hood. Piping in body material on sleeves and contrast lining inside hood.

Fabric: 80% Cotton, 20% polyester
Size: S - XXL (990 black S - 3XL), Lady S - XXL
Wash: 60°
Weight: 400 g/m²



460
red

550
brown

855
navy

955
darkgreymelange

990
black





MELROSE - 132016
MELROSE LADY - 132017

Soft and flexible maritime sweater in a blended material for nice comfort. Unique solution with detachable hood where the zippers have both a practical and decorative function. Sturdy contrast colour zippers. Two side pockets and same colour decorative seams. Fitted cuffs.

Fabric: 95% Cotton, 5% elastan
Size: S - 3XL, Lady S - XXL
Wash: 40°
Weight: 330 g/m²



100
white



855
navy



990
black



WILMINGTON - 139028
WILMINGTON LADY - 139029

Bonded hood jacket with a single jersey outside and soft-brushed fleece (coral) inside for optimal comfort. Decorative bands and matching colour contrast seams. Drawstrings in hood. Two front pockets with hidden zippers and fitted sleeve ends.

Fabric: 60% Cotton, 40% polyester
 Size: S - 3XL, Lady S - XXL
 Wash: 40°
 Weight: 455 g/m²



735
blue

990
black

855
navy



FORBES - 139024
FORBES LADY - 139025

Bonded micro fleece jacket in a breathable wind- and waterrepellent fabric (WP 5000/MVP 5000). Decorative flatlock stitching. Unique design with a zipper that makes the hood detachable. Raglan sleeves with thumb loops. Three front pockets.

Fabric: 100% polyester
 Size: S - 3XL, Lady S - XXL
 Wash: 40°
 Weight: 300 g/m²



990
black





WARREN - 139046
WARREN LADY - 139047

Flexible and soft sweater in polar fleece. Full length zipper and front pockets with tone on tone YKK zippers. The side and arm seams have been moved forward for a perfect fit. Decorative flatlock stitching and elastic edging band at hem and sleeve, all tone in tone.

Fabric: 100% polyester
 Size: S - 3XL, Lady S - XXL
 Wash: 40°
 Weight: 280 g/m²



WYNDHAM - 139011
WYNDHAM LADY - 139012

Soft and comfortable bonded microfleece jacket. Fulllength front zip. Decorative flatlock stitching. Two zipped side pockets. Hem with elastical drawstring and stopper. Lining in contrasting colour.

Fabric: 100% polyester
 Size: S - XXL, Lady S - XXL
 Wash: 40°
 Weight: 370 g/m²







MELTON VEST - 139042
MELTON VEST LADY - 139043

Comfortable and flexible microfleece vest. Perfect as a second layer. Full length zipper and front pockets with two-tone YKK zippers. The side seams have been moved forward for a perfect fit. Decorative flatlock stitching and elastic edging band at hem, all tone in tone

Fabric: 100% polyester
 Size: S - 3XL, Lady S - XXL
 Wash: 40°
 Weight: 190 g/m²



460 red 690 dark green 767 royal 855 navy 967 grey 990 black

MELTON HALFZIP - 139044
MELTON HALFZIP LADY - 139045

Comfortable and flexible micro fleece sweater. Perfect as a second layer. Short zip with a two-tone YKK zipper. Decorative flatlock stitching and elastic edging band at hem and sleeve, all tone in tone

Fabric: 100% polyester
 Size: S - 3XL, Lady S - XXL
 Wash: 40°
 Weight: 190 g/m²



460 red 690 dark green 767 royal 855 navy 967 grey 990 black

MELTON FULLZIP - 139040
MELTON FULLZIP LADY - 139041

Comfortable and flexible micro fleece sweater with raglan sleeves. Full length zipper and front pockets with two-tone YKK zippers. The side seams have been moved forward for a perfect fit. Decorative flatlock stitching and elastic edging band at hem and sleeve, all tone in tone.

Fabric: 100% polyester
 Size: S - 3XL, Lady S - XXL
 Wash: 40°
 Weight: 190 g/m²



460 red 690 dark green 767 royal 855 navy 967 grey 990 black







NEWS!

WARWICK - 131040 WARWICK LADY - 131041

Cotton jacket with solid hood in retrospect. Stylish ribbon details in the waist and inside the hem. Fully lined with YKK zipper that goes up in collar/hood. Strong drawstring with stopper in both hood and hem. Folded front pockets with decorative stitching and an inner pocket.

Ladies is a longer model with a fixed hood in retrospect. Stylish edging details in the waist and inside the hem. Fully lined with YKK zipper that goes up in collar/hood. Strong drawstring with stopper in both hood and waist. Folded front pockets with decorative knits and inner pocket. Push button in cuffs for size control

Fabric: 100% cottontwill
Padding: 100% polyester
Size: S - 3XL, Lady S - XXL
Wash: 40°

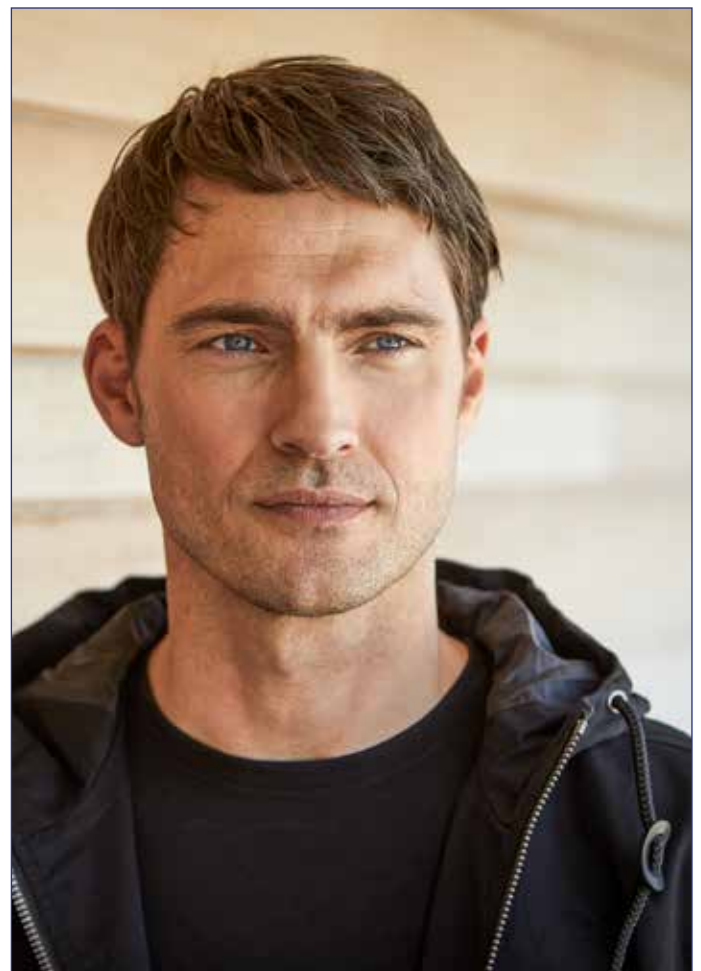


990
black



665
dark olive

665
dark olive





ROCKINGHAM UNISEX - 131026

Ultra lightweight windbreaker in micro-ripstop with mesh lining. Fixed hood and pre-curved sleeves for better fit. Side pockets with zipper and decorative transfer. Elastic rib with stitching at hem and sleeves. Light and easy to pack.

Fabric: 100% polyester
 Filling: 100% polyester
 Size: XS - 3XL
 Wash: 30°



100
white

990
black



WINTON UNISEX - 131027

Flexible wind jacket with lining in brushed fleece tricot. Fitted with a two-tone full length YKK zipper. Two front pockets. Elastic cuffs and a hood that can be stored in the collar. One inside pocket.

Fabric: 100% polyester
 Size: XS - 4XL
 Wash: 30°



690
darkgreen



290
orange

460
red



767
royal

855
navy



967
grey

990
black





GERALDTON - 139017
GERALDTON LADY - 139018

Functional body warmer made of wind- and waterrepellent material. The body warmer is bonded with polyester ripstop and spandex on the outside and warm microfleece on the inside.

Fabric: 96% polyester, 4% spandex
 Size: S - XXL, Lady S - XXL
 Wash: 40°



STIRLING - 139015
STIRLING LADY - 139016

Functional jacket made of wind- and waterrepellent material. The jacket is bonded with polyester ripstop and spandex on the outside and warm microfleece on the inside. Fulllength frontzip. Two zipped side pockets. Hem with elastical drawstring and stopper.

Fabric: 96% polyester, 4% spandex
 Size: S - 3XL (990 black S - XXL), Lady S - XXL
 Wash: 40°







NEWS!

GLENROY - 131044 GLENROY LADY - 131045

Quilted jacket in modern cut. Strong edge bands tone-in-tone at the cuffs, bottom, pocket and under zipper. YKK zipper that runs up in collar. Spun with hidden pushbuttons in shifted sideseam. Passpoal as decoration at shoulders aswell as around collar. Folded front pockets with pocketcaps that can be folded in. All seams on the inside are covered with edge bands. The waist on the ladies model can be adjusted with hidden pushbuttons.

Fabric: 100% nylon
Padding: 100% polyester
Lining: 100% polyester
Size: S - 3XL, Lady S - XXL
Wash: 30°





BAYSWATER - 131036
BAYSWATER LADY - 131037

Flexible softshell jacket in a wind- and waterrepellent material. Bonded with comfortable fleece on the inside. Full length zipper, chest pocket and front pockets with two-tone YKK zippers. Adjustable cuffs and a drawstring in hem. The inside has a matching contrasting colour, except 990/Black that has a tone in tone inside.

Fabric: 96% polyester, 4% spandex
 Size: S - 3XL, Lady S - XXL
 Wash: 30°



PILBERRA - 131008
PILBERRA LADY - 131004

Softshell jacket made by a breathable, windproof and waterproof material. A well tailored model with extra length at the back. Full length front zipper, all visible zippers in a different colour. Two side pockets, pocket on arm large, one inside pocket with zipper. Removable and adjustable hood. Tailored bend in arms, adjustable cuffs with Velcro fasteners, drawstring with stopper in jacket hem.

Fabric: 100% polyester
 Size: XS - XXL, Lady: S - XXL (460 red S - XL)
 Wash: 30°





MABEL - 131034
MABEL LADY - 131035

Contemporary jacket with down-like light padding. Modern decoration stitching on side panels and collar. Full length zipper, chest pocket and front pockets with YKK zippers. Lining in nice and contrasting colors. If you would like a tone in tone lining, select; 290 orange or 460 red. Slim elastic in hem and cuffs.

Fabric: 100% polyester
 Padding: 100% polyester
 Size: S - 3XL, Lady S - XXL
 Wash: 30°



GRAFTON - 131018
GRAFTON LADY - 131019

Stylish and comfortable lightweight jacket with 3M Thinsulate lining. Specially treated outer fabric gives the right luster and feeling. Two side pockets, slim elastic at the hem and sleeves. Detailed inside with an inner pocket in steel blue jacket.

Fabric: 100% nylon
 Padding: 3M Thinsulate
 Filling: 100% polyester
 Size: S - 3XL, Lady: S - XXL
 Wash: 40°



MCKENZIE UNISEX- 131031

Sporty jacket in classic style with fleece lining in the torso, wind- and water-resistant material (WV 3000/MWP 3000). Sleeve with thin padding and lining and a thin cuff. Full zip with decorative stripe in contrasting color also found on the collar and around the pockets. Precurved sleeves with adjustable cuffs and a drawstring hem. Two side pockets and two inside pockets - all provided with zippers.

Fabric: 100% nylon
 Filling: 100% polyester
 Size: XS - 4XL
 Wash: 30°



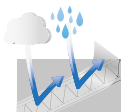
990
black



CROSSCUT UNISEX - 131010

Sporty jacket which is wind- and waterproof and breathable (WP5000/MVP5000) with taped seams and mesh lining. Articulated sleeves for a better fit. Two-colored YKK zippers. Vigorous ribbed hem and sleeves as well as on the inside collar. Double inner pockets.

Fabric: 100% nylon
 Filling: 100% polyester
 Size: XS - 3XL
 Wash: 30°



100
white

855
navy

990
black

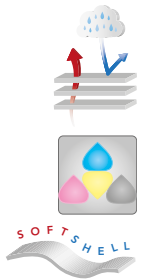




MOUNT WALL - 131020
MOUNT WALL LADY - 131021

Lightly padded softshell jacket suitable for almost every day of the year. Designed with two different materials to create nice contrasts, both are wind- and water-repellent (WP 3000/MVP 1000). Adjustable and removable hood, zipped outer pockets and sleeve pocket, elastic draw cord at bottom. Velcro adjust and a thin flexible inner cuff at the bottom of the sleeve. Zipped inner pocket for your mobile etc, rubber headphone plug-in and one large practical inner mesh pocket.

Fabric: 95% polyester, 5% spandex
 Filling: 100% polyester
 Size: S - XXL (460 red, S - 3XL, 990 black, 855 navy S - 4XL), Lady S - XXL
 Wash: 30°



GOSFORD - 131022
GOSFORD LADY - 131023

Bonded jacket in a material with a woven stretch outside and textured micro fleece inside. The material is wind- and water-repellent and breathable (WP 5000/MVP 5000). High cut fleece lined collar with a smart detachable hood solution. Two front pockets. Fitted sleeves with adjustable cuffs. Well-tailored on the inside as well.

Fabric: 50% polyester, 45% nylon, 5% spandex
 Filling: 100% polyester
 Size: S - 3XL, Lady S - XXL
 Wash: 40°





STONEFIELD - 131042
STONEFIELD LADY - 131043

Sporty padded jacket with a good fit that suits many occasions. Wind and waterproof with breathability (WVP3000 / MWP3000) and taped seams. Padded with lining sewn in ducts. Curved sleeves with nudge underneath. Heavy YKK zipper that runs up in collar, covered with button closure and push buttons. Folded front pockets with zippers and an inner pocket. Hood can be adjusted on both front and back.

The ladies model is a bit longer and finely cut for the best fit.

Fabric: 100% polyester
 Padding: 100% polyester
 Size: S - 4XL, Lady XS-3XL
 Wash: 30°



986
dark antracite



986
dark antracite



CARLTON HILL- 131032
CARLTON HILL LADY - 131033

Sporty parka in wind- and water resistant material (WP 3000/MWP 3000). Fully lined with extended back and drawstring at waist. Cuffs at the sleeves and inside collar for best comfort. Placket with press buttons and sturdy zipper in front and on the breast pocket. Two front pockets, two inside pockets and a detachable hood that is adjustable.

Fabric: 100% nylon
 Padding: 100% polyester
 Size: S - 4XL (855 navy S - XXL), Lady S - 3XL
 Wash: 30°



PEAK HILL - 131016
PEAK HILL LADY - 131017

Padded parka jacket. The materials unique ability to maintain a temperature of 32 degrees keeps you warm whatever the weather! This jacket is windproof and water-repellent. Large outside pockets with side pockets, inside pocket. Two slanted breast pockets, pocket on arm with watertight zip. Arms with ribbed inner cuffs. Hem with elastical drawstring and stopper. Detachable and adjustable hood with hidden zipper in the lining for easier printing/profiling.

Fabric: 100% polyester
 Filling: 100% polyester
 Size: S - XXL (black S - 4XL), Lady: S - XXL
 Wash: 40°

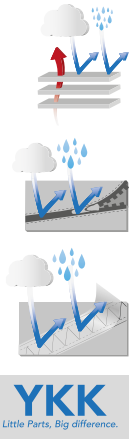




EXPLORE UNISEX - 131030

Wind- and waterproof shell jacket with taped contrast colour seams and high breathable function (WP 10 000/MPV 5000). Raglan cut. Fleece lined collar with adjustable hood. Ventilation pockets under the sleeves. All zippers are waterproof. Two front pockets and breast pocket with earphone plug-in. Adjustable Velcro cuffs. Elastic drawstring with stoppers at the bottom. Tailored inside as well with several stylish and practical details.

Fabric: 100% polyester
 Size: XS-4XL
 Wash: 30°



982
antracite



CORDILLO - 131024 CORDILLO LADY - 131025

Sporty wind- and waterproof parka with taped seams (WP 5000/ MVP 3000), lightly 3M Thinsulate padded to keep you warm and dry all year round. High collar with maritime seams and a tuckaway hood in collar. Adjustable waist and bottom and cuffed sleeves for optimum comfort. Front pockets with push buttons, sleeve pocket and badge pocket. Detailed inside with mobile phone pocket and zipped inner pocket.

Fabric: 100% nylon
 Filling: 3M Thinsulate
 Filling: 100% polyester
 Size: S - 3XL, Lady S - XXL
 Wash: 30°



990
black

SPORT POLO & T-SHIRTS



NEWS!
BENDIGO - 134046
BENDIGO LADY - 134047
p. 5



AUCKLAND - 134006
AUCKLAND LADY - 134002
AUCKLAND JUNIOR - 134007
p. 13



STANFORD - 134042
STANFORD LADY - 134043
p. 10



WICKHAM - 134018
WICKHAM LADY - 134019
p. 11

POLO PIQUE



NEWS!
HILLSTONE - 134058
HILLSTONE LADY - 134059
p. 4



PARKES - 134054
PARKES LADY - 134055
p. 8



GIFFORD - 134056
GIFFORD LADY - 134057
p. 8



LYNTON 134030
LYNTON LADY
p. 9



EATON - 134026
EATON LADY - 134027
p. 9



EATON BRANDED - 13H4026
EATON BRANDED LADY - 13H4027
p. 9



SHEPPARTON - 134052
SHEPPARTON LADY - 134053
p. 10



WINNING - 134020
WINNING LADY - 134021
p. 11



CORAL BAY - 134022
CORAL BAY LADY - 134023
p. 13



TACTICAL 10 RACING POLO
134034
p. 12



LANGLEY LADY
134016
p. 12



MILLSTREAM - 132012
MILLSTREAM LADY - 132013
p. 14



CARDWELL UNISEX
132018
p. 14

COLLEGE



WESTBURY UNISEX
132020
p. 15



BIRDSVILLE - 132007
BIRDSVILLE LADY - 132008
p. 16



RIVERTON UNISEX
132019
p. 15



BROOMHILLE - 132003
BROOMHILLE LADY - 132004
p. 16



MELROSE - 132016
MELROSE LADY - 132017
p. 17

FLEECE



WARREN - 139046
WARREN LADY - 139047
p. 19



WYNDHAM - 139011
WYNDHAM LADY - 139012
p. 19



MELTON VEST - 139042
MELTON VEST LADY - 139043
p. 21



MELTON HALFZIP - 139044
MELTON HALFZIP LADY - 139045
p. 21



MELTON FULLZIP 139040
MELTON FULLZIP LADY - 139041
p. 21



WILMINGTON - 139028
WILMINGTON LADY - 139029
p. 18



FORBES - 139024
FORBES LADY - 139025
p. 18

SOFTSHELL



BAYSWATER - 131036
BAYSWATER LADY - 131037
p. 32



STIRLING - 139015
STIRLING LADY - 139016
p. 27



GERALDTON - 139017
GERALDTON LADY - 139018
p. 27



PILBERRA - 131008
PILBERRA LADY - 131004
p. 32



MOUNT WALL - 131020
MOUNT WALL LADY - 131021
p. 35

JACKETS



NEWS!
WARWICK - 131040
WARWICK LADY - 131041
p. 24



ROCKINGHAM UNISEX
131026
p. 26



WINTON UNISEX
131027
p. 26



NEWS!
GLENROY - 131044
GLENROY LADY - 131045
p. 30



MABEL - 131034
MABEL LADY - 131035
p. 33



GRAFTON - 131018
GRAFTON LADY - 131019
p. 33



CROSSCUT UNISEX
131010
p. 34



MCKENZIE UNISEX
131031
p. 34



GOSFORD - 131022
GOSFORD LADY - 131023
p. 35



NEWS!
STONEFIELD - 131042
STONEFIELD LADY - 131043
p. 37



CARLTON HILL - 131032
CARLTON HILL LADY - 131033
p. 38



PEAK HILL - 131036
PEAK HILL LADY - 131037
p. 38



EXPLORE UNISEX
131030
p. 39



CORDILLO - 131024
CORDILLO LADY - 131025
p. 39

QUALITY SPECIFICATION



3M™ THINSULATE™

3M™ Thinsulate™ insulation helps to keep you warm when it's cold outside. The microfibers that make up Thinsulate insulation work by trapping air molecules between you and the outside. The more air a quality traps in a given space, the better it insulates you from the cold outside air.



COOLDRY / COOLTOUCH

This is a quality that both breathes and releases moisture. Cooldry also stands out because of its quick-drying nature, ensuring a feeling of freshness even during physical exertion.



WIND- / WATER REPELLENT AND BREATHABLE

By applying this method, a windproof with a water repellent surface is obtained. This can be done chemically or through weaving technologies in the quality.



SOFTSHELL

Softshell is a modern quality that provides optimal freedom of movement. The quality is wind- and waterproof with good breathability. Softshell is a soft and stretchable 3-layer laminate, a quality that dries very rapidly. Require a special printing technique



WIND- / WATERPROOF AND BREATHABLE

These three functions are found in most outer garments, which have a special coating or membran on the inside of the outermost layer that stops water and wind while allowing the quality to breath.



BREATHABLE

This is a quality that both breathes and releases moisture. A soft and flexible quality that can be washed many times without losing its shape and function.



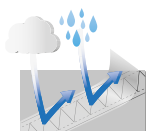
WIND- / WATERPROOF ZIPPER

If a garment is completely windproof and waterproof, tight zipper chains are required.



OEKO-TEX

Textiles bearing the OEKO-TEX® label meet high human ecological requirements and are free from any amounts of harmful substances. www.oeko-tex.com



WIND- / WATERPROOF APED SEAMS

In order for a product to be waterproof the seams needs to be taped.



YKK ZIPPERS

High quality zippers.

Color imaging can occur for photo and print technical reasons between the images in the catalog and the actual products. It may also, for reasons of light, differentiate between product image and environmental image on the same product. In these cases, we refer primarily to the product images.

This catalog is produced by Textilgrossisten Hefa AB with the help of photographer Max Alm-Norell.

Printed in Sweden © 2018 Textilgrossisten Hefa AB (publ.).



With dreams and goals, life becomes so much more meaningful and exciting, whether it's the small daily thing or it's the big important decisions in our business or private life. By raising boundaries and daring chances, our curiosity and power are put in motion and take us on a journey. Whether it's in the whole wide world or if it explores your everyday life.

When we create the D.A.D garment we want to design functional quality clothing that reinforces the ambitious business profile. We believe in a professional expression and personal meeting. We want you to dare to show who you really are. Our goal is to be the best partner with the best brand once you decide to raise your own brand.

That is why we call us D.A.D - a brand made for you to Dream And Discover.

D.A.D
SPORTSWEAR