



graphix

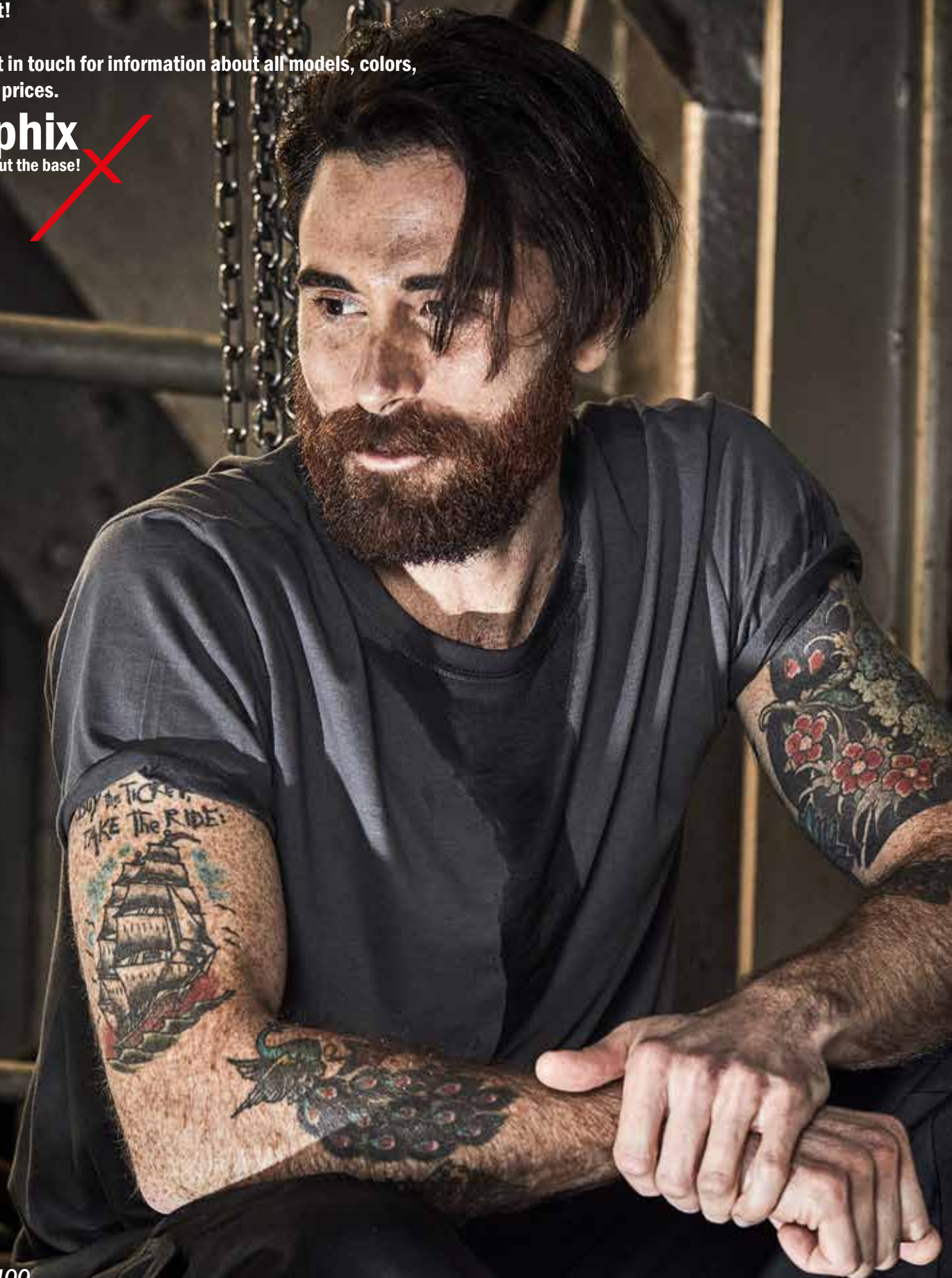
**ORIGINAL
WORKWEAR
SPORTSWEAR**

Graphix is the obvious choice for hard workers and people with an active lifestyle and provides a solid base of quality garments. The originals are made from both mixed materials and 100% cotton and the collection contains t-shirts in different shapes and a wide range of college such as roundneck, hoods, fullzip, halfzip, pants and even a jumpsuit!

Please get in touch for information about all models, colors, stock and prices.

Graphix

- it's all about the base!



art. 161400



art. 163200



art. 163800



Industrial Wear is a collection of garments produced especially to withstand industrial wash of 85 degrees. Under the industrial label you will find pique, roundneck and halfzip.

Please get in touch for information about all models, colors, stock and prices.

Graphix
- it's all about the base!

art. 162590



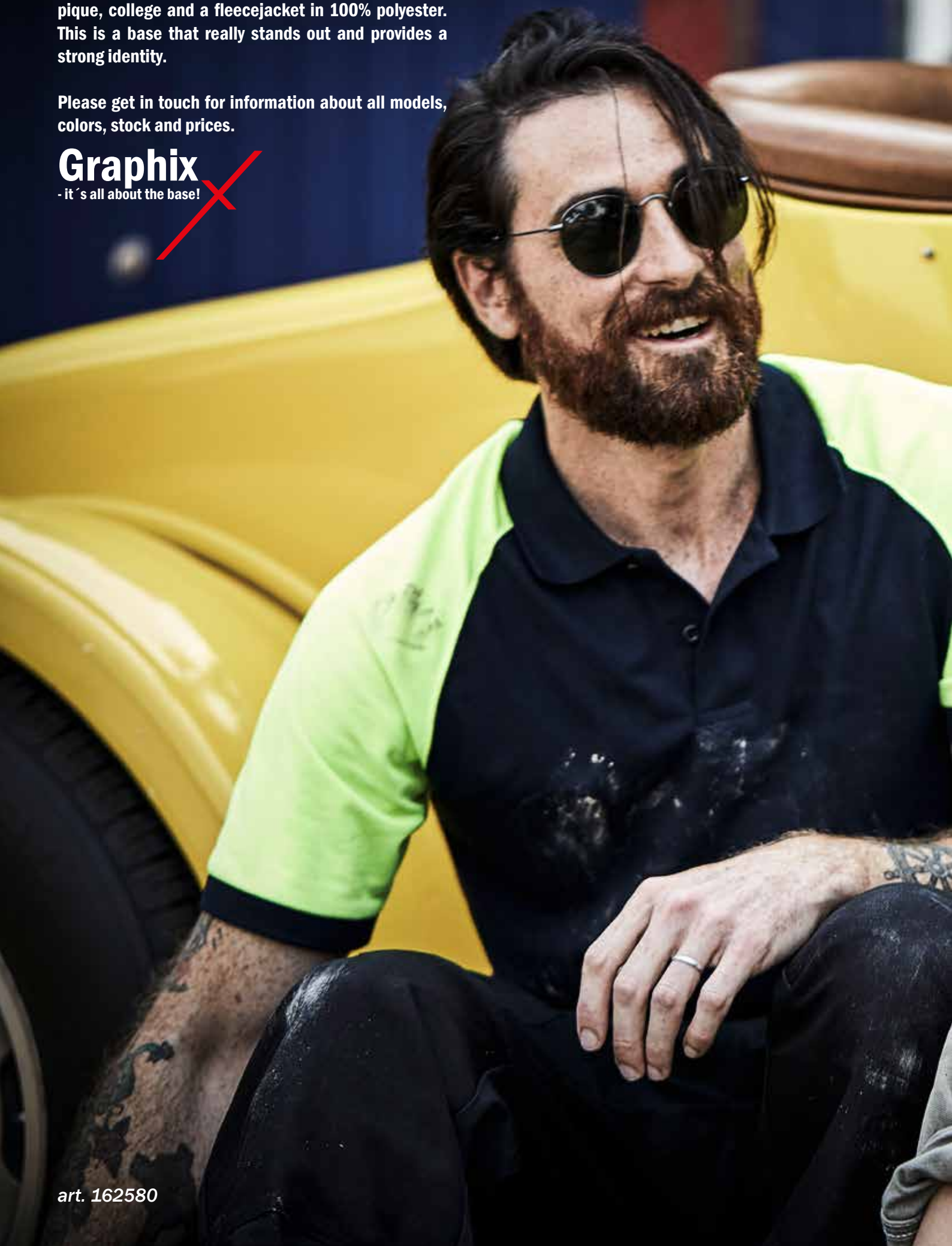
art. 163690

Our two-colored base are made in 65% polyester and 35% cotton. The main collection contains t-shirt, pique, college and a flecejacket in 100% polyester. This is a base that really stands out and provides a strong identity.

Please get in touch for information about all models, colors, stock and prices.

Graphix

- it's all about the base!



art. 162580



The sportswear is an overall concept with the entire range from tank top, t-shirt and pique to hoods and tights. The colors are bright and clear and is possible to mix and match in several combinations. We also thought a little bit extra on the seams and shapes so the garments really feels comfortable regardless of which activity you choose to do.

Please get in touch for information about all models, colors, stock and prices.

Graphix

- it's all about the base!

art. 1690204/1690003





art. 1690200/1690206



art. 1690201/1690203



art. 1690101/1690104

art. 163280

graphiX

- it's all about the base!

Please get in touch for information about all models, colors, stock and prices.